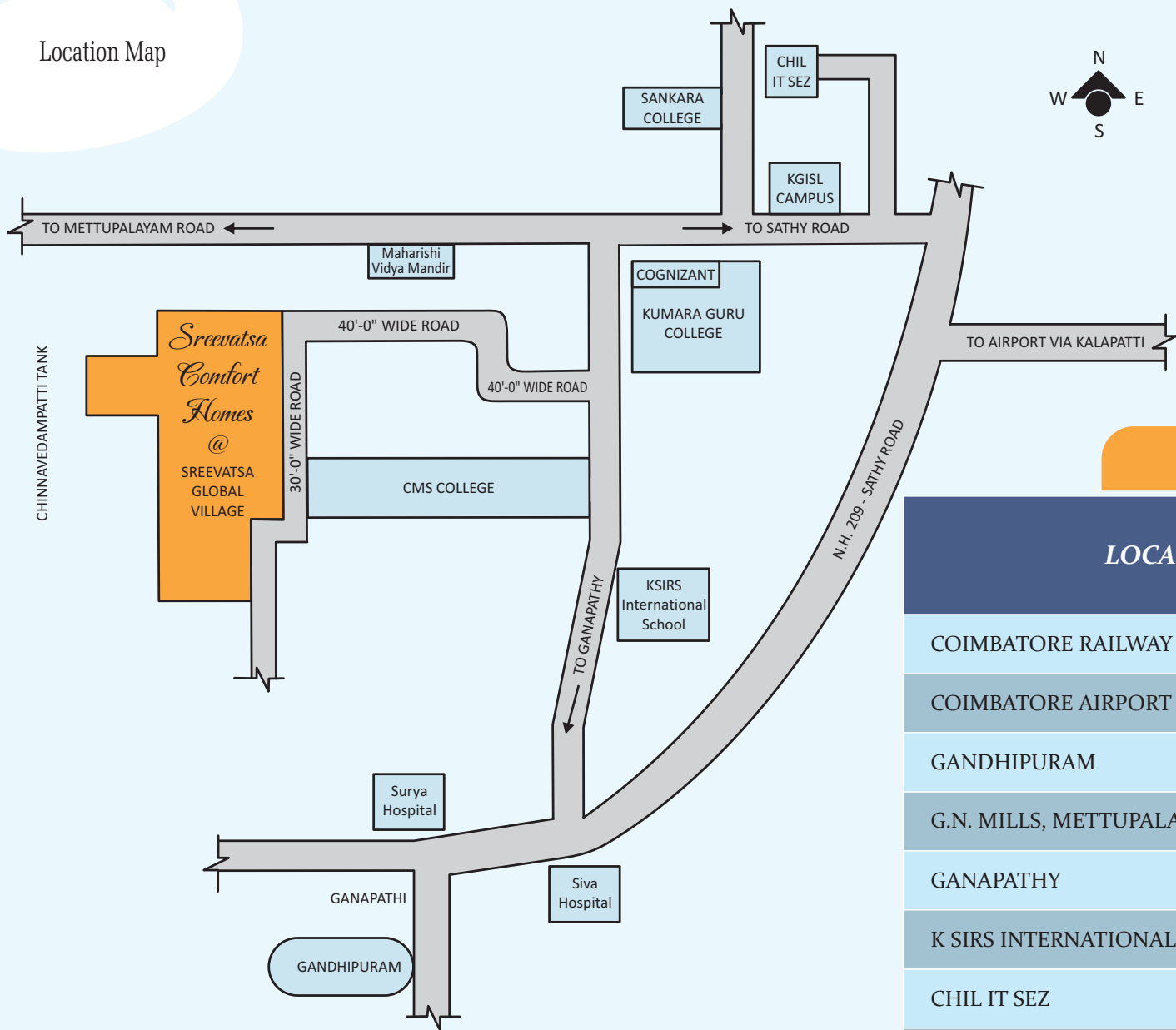


Location Map



Distance Chart

LOCATION	DISTANCE FROM SITE IN KMS.
COIMBATORE RAILWAY STATION	10
COIMBATORE AIRPORT	9
GANDHIPURAM	7.5
G.N. MILLS, METTUPALAYAM ROAD	6.4
GANAPATHY	3.7
K SIRS INTERNATIONAL SCHOOL	4
CHIL IT SEZ	6
MAHARISHI VIDYA MANDIR SCHOOL	1.5
KUMARAGURU COLLEGE OF TECHNOLOGY	0.5
CMS COLLEGE	0.5
KGISL	2.5
NILGIRIS DEPARTMENTAL STORE, GANAPATHY	3.7
SANKARA EYE HOSPITAL	8.5

All distances shown are approximate



SREEVATSA REAL ESTATES PVT. LTD.

New No.324 (Old No.8/2), Mettupalayam Road, Coimbatore - 641 043.

Tel : 0422 - 2432184, 94433 41901, 94430 21990 E-mail : realestate@sreevatsa.com Web : www.sreevatsa.com



Architects : M/s. Sankar & Associates. Electrical Consultant : Mr. P.P. Subramaniam. Legal Consultant : Mr. P.R. Ramakrishnan

Phase III



Building on the Foundation of your Trust

Sreevatsa Comfort Homes

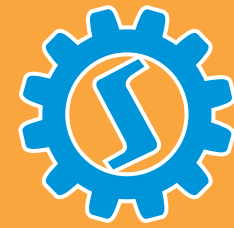
for all age groups

Meeting your needs to be independent
Setting you free to enjoy life



IN THE IT CORRIDOR,
OPP. KUMARAGURU COLLEGE,
ATTHIPALAYAM ROAD,
OFF SATHY ROAD, COIMBATORE

A project of
Sreevatsa Real Estates
Pvt. Ltd.



Sreevatsa Group

Sreevatsa Group of Companies was started in the year 1942 at Coimbatore. The well-diversified group has interests in Trading, Finance, Exports and Real Estate. Sreevatsa Real Estates (P) Ltd was incorporated in 1995. Over the years, the company has executed several mini townships, residential apartments and commercial complexes which have become landmarks in the city. The company has completed over two million sq.ft of construction and has earned a reputation for adhering to values, commitment to quality and total transparency resulting in hundreds of satisfied customers.

Sreevatsa has now launched a new concept in community living through Sreevatsa Comfort Homes to commemorate its achievements in construction.

Launching a revolutionary concept in Community Living

Sreevatsa Comfort Homes

An integrated community which brings together busy working people, freedom loving home makers and independent senior citizens by offering them the right facilities and services thereby contributing to a vibrant, richer and more fulfilling lifestyle.

Sreevatsa Global Village is a gated community coming up on 20 acres of land at Saravanampatti, Coimbatore. Phase I comprising of 43 villas and 80 luxury apartments has been fully booked and is fast nearing completion. Sreevatsa Comfort Homes comprising of 112 three bedroom flats has been under taken up under Phase II. Bookings have been completed for Phase II and construction is in progress. Bookings are now accepted for Phase III comprising of 3 bedroom flats.

Comfort Homes

***Homes for the busy working people,
the freedom loving home makers
and independent senior citizens.***

Life becomes more enjoyable when you break free from daily chores. Sreevatsa Comfort Homes offer you freedom from chores, hassles and insecurity by giving you more control over your lives and time. We offer a living space that helps you create more time for yourself and a choice to channelise your energies and time on those tasks which are pleasurable for you. Carve out a lifestyle for yourself in a contemporary and comfortable home that wraps itself around your needs.

Sreevatsa comfort homes can offer you Infrastructure and services that meet age-specific, time-specific and individual needs.

*Freedom from
daily chores
for the busy bee.*

*Get more out of life
to achieve the
perfect work-life
balance*

It is not enough to have a modern home with all the comforts. You need a home which is intelligent enough to take care of itself and your needs too, so that you can achieve the healthy and comfortable lifestyle you are looking for. Sreevatsa comfort homes offer services that will take care of

- Routine housekeeping like daily house cleaning
- Regular / diet kitchen services including door delivery of food
- Services for the payment of utility bills like electricity, telephone, gas etc.,



Sreevatsa homes can help you make more time for yourself by freeing you from several hassles. Our infrastructure, amenities and services will help you plan and devote time for yourselves and achieve a healthy and event-filled life.

Freedom from hassles for the homemaker

- In house sports, recreation facilities and activities for children to avoid commuting
- Tennis & Shuttle Courts, Gym and Swimming pool for a healthier lifestyle
- Vibrant club house with various activities of interest
- Transportation to and from city for cultural events and other programmes



***Freedom from insecurity -
Enabling independent living for the elderly***

At Sreevatsa Comfort homes, we understand and appreciate the fact that life is not just about spending your well-earned retirement in leisurely pursuits, it is also about creating an independent and dignified lifestyle for you and your loved ones. Our bouquet of offerings for the senior citizen includes

- A vibrant gated community where you live and interact with all age groups
- Structural comforts that come built in with our homes – including wide doors and long lifts to accommodate wheel chairs and stretchers, toilets equipped with anti-skid tiles, grab bars and emergency alarm (on request)
- Specialised healthcare services like regular doctor checkup, doctor on call and tie-up with the hospital for a host of medical services.
- 24x7 security of a gated community with CCTVs.



Change the way you live. Explore the joy of living in a community that is built on the joys, experiences and collective wisdom of people from all age groups.

Come experience it first hand at SREEVATSA COMFORT HOMES @ Sreevatsa Global Village, Sarvanampatti. Visit our model flat.





Amenities

that will turn you into a home bird

- A Club house with multi-purpose hall and Gymnasium
- Swimming Pool
- Landscaped lawn with children play area
- Landscaped area between apartment buildings
- One Tennis Court and one indoor shuttle court
- STP and recycling of treated water
- Black top roads with street lights
- Back up generator for common essential services of apartments and street lights
- Reticulated Piped gas supply to kitchen
- Stretcher Lift
- Drinking water supply to kitchen and bore well water supply for all other requirements
- Peripheral compound wall of 5 ½' height all round the complex
- 24 hours security
- Driveway with paver tiles

Phase III



64 Apartments



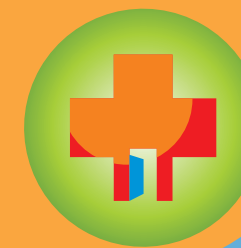
Sreevatsa Comfort Homes

Facilities & Services (Optional)*



House keeping & Related Services

- Daily house cleaning – brooming and floor mopping
- Regular / diet kitchen services and common dining area. Door delivery of hygienic food and Party orders
- Services for the payment of utility bills like electricity, gas, telephone etc.,
- Property Management Services



Healthcare services (through a hospital tie-up)

- Periodical medical checkups
- Clinic with daily visits by doctor
- Ambulance



Structural comforts for senior citizens (on request)

- Wide doors to accommodate wheel chairs
- Anti-skid flooring, grab bars and emergency alarm in toilet



Sreevatsa Comfort Homes @



PHASE III

SITE PLAN



Standard Specification

1. **STRUCTURE** :- RCC framed structure and 9" thick external panel walls and 4½" thick partition walls with brick masonry and plastering.
2. **DOORS** :-
 - A. **ENTRANCE DOOR** :-
 - Door :- Teakwood frame, teakwood shutters and surface finished with melamine mat polish.
 - Hardware :- Stainless Steel hardware fittings.
 - B. **ALL OTHER DOORS** :-
 - Door :- Country wood door frame, membrane pressed panelled shutters with paint finish.
 - Hardware :- Stainless steel hardware fittings.
3. **WINDOWS** :-
 - UPVC Windows.
 - Security M.S. grills.
4. **FLOORING** :-
 - Floor :- Vitrified tiles of standard make 600 mm x 600 mm and shade approved by the architect.
 - Skirting :- 3" height granite.
5. **BATHROOMS** :-
 - Floor :- Antiskid ceramic tiles.
 - Walls :- Glazed tiles up to door height.
 - Counter :- White marble counter with circular wash basin of Ivory colour.
 - CP Fittings :- Towel rod, Hot & Cold water mixer, ablution tap etc.,
6. **KITCHEN** :-
 - Counter :- Black granite.
 - Sink :- Stainless Steel Sink (single bowl single drain).
 - Wall :- Ceramic tiles up to 2' height from counter top.
7. **SANITARY FIXTURES & FITTINGS** :- Ivory colour wall mounted European closet and 18" circular wash basin. Good quality chromium plated fittings.
8. **PLUMBING** :- Concealed UPVC piping for cold water and CPVC piping for hot water line. All internal pipes concealed and external open.
9. **PAINTING** :-
 - A. **INTERNAL WALLS** :-
 - Two coats of putty.
 - One coat of primer.
 - B. **EXTERNAL WALLS** :-
 - One coat of white cement primer.
 - Two coats of exterior emulsion (Architect approved colour).
 - C. **GRILLS** :-
 - One coat of primer.
 - Two coats of enamel (Architect approved colour).
10. **ELECTRICAL** :-
 - Three Phase power supply through individual DB & ELCB.
 - Wiring: Concealed wiring of standard IS specified make.
 - Switches: Modular switches of standard IS specified make.
 - Back up power supply of 500 watts from common generator. (Separate schedule of electrical fixtures enclosed)
11. **TERRACE** :- Surki and burnt clay weathering tiles.
12. **WATER SUPPLY** :- Adequate storage sumps for the entire complex for bore well water and drinking water. Drinking water supply to kitchen and bore well water supply for all other requirements. Drinking water of 300 litres per day will be supplied for each apartment during specific timings only.
13. **SEWAGE DISPOSAL** :- Common STP for apartments and villas. Treated water will be recycled.
14. **STAIRCASE** :-
 - Riser & Tread: Adanga marble.
 - Handrails: M.S. Grills of architect approved design.
15. **BALCONY PARAPET WALL** :- 3' height from floor level as per architect design.

All colours and designs shall be as per architect's choice and approval.

The information contained herein does not form part of the contract and is subject to change. The elevation given is an artistic impression only. The Brochure is neither a legal offer nor an invitation to an offer.



SOME OF OUR COMPLETED PROJECTS :

- **SREEVATSA GARDENS** : Spread over 25 acres on Mettupalayam Road, Coimbatore, Sreevatsa Gardens comprises of 145 independent villas, 48 duplex houses and 128 apartments. It was the first gated community to come up in the city. An exclusive club house, swimming pool, temple and landscaped garden add serenity to the place.
- **SREEVATSA HILLVIEW** : This residential colony at Kovaipudur comprising of 120 independent villas has come up on 12 acres of land. The colony has an exclusive club house, temple, jogging track and landscaped garden.
- **SREEVATSA ENCLAVE** : Spread over 8 acres of land on Mettupalayam Road, Sreevatsa Enclave which has a beautiful view of the Western Ghats comprises of 49 individual villas with exclusive club house, swimming pool, temple, tennis court, and landscaped garden.
- **SREEVATSA RESIDENCY** : This gated community on the main Mettupalayam Road houses 224 apartments and 20 villas with a great ambience for comfortable living. A tennis court, swimming pool, community hall with shuttle court and club house add to the facilities.
- **SREEVATSA SHIVA COMMERCIAL APARTMENTS** : Built on the main commercial hub of Coimbatore, on 100 feet road, Gandhipuram.
- **SREEVATSA KRISHNA APARTMENTS, CHENNAI** : The maiden housing project in Chennai, has only 7 exclusive deluxe apartments built on 2.5 grounds.
- **SREEVATSA DARSHAN APARTMENTS** : 16 luxury flats of more than 2500 sft. each have been built on 40 cents of land in Bharathi Park 1st Cross, Saibaba Colony. There is an exclusive club house, gymnasium, swimming pool and landscaped garden with children play area.
- **SREEVATSA UPASANA APARTMENTS** : Built on Bharathi Park 1st Cross, Saibaba Colony, this is a refreshing break from the run of the mill apartments. A touch of artistic elegance and architectural grandeur are found in this project which has 24 numbers of three bedroom apartments.
- **SREEVATSA CENTRE** : This is a second commercial development of the Company and comprises of 2 basements for car parking and 4 floors each with plinth area of 7000 sft. The centre houses several prestigious offices and IT Companies.



ONGOING PROJECTS :

- **SREEVATSA PLATINUM**: This project consists of 72 apartments in two blocks in a land area of 1.6 acres on the main Thadagam Road.
- **SREEVATSA SANKARA** : This project is coming up at Kalapatti Village close to Sathy Road, NH209. Phase I of the project comprising of 112 flats has been fully booked and construction has commenced. Booking has commenced for Phase II comprising of 176, 2BR & 3BR flats. These flats have various amenities such as Children's play area, Reticulated piped gas connection, R.O. plant, Back up generator for common area and Hydro pneumatic pumping system.
- **SREEVATSA KAILASH** : This multi-storied building comprising of 128 apartments in G+7 floors is coming up on 2.65 acres of land at Chokkampudur close to R.S.Puram.
- **SREEVATSA SRI LAKSHMI** : A new project with 80 Nos. of 2 & 3 bedroom flats coming up near Coddissia Trade Fair Complex and Gitanjali Matriculation School at Peelamedu. It will have various amenities such as piped gas supply, sewage treatment plant, backup generator and lift.

FORTHCOMING PROJECT :

- **SREEVATSA SRIKESHAV** : A project with 8 exclusive luxury apartments coming up at R.S. Puram, Near the R.S. Puram Club with high end specifications and amenities.

In all, Sreevatsa Real Estates (P) Limited has built and handed over homes to over 1200 happy families. It is in the process of building another million sft within the next 4 years.